



Technical Theatre Apprenticeship

Job Description

What is a theatre technician?

A theatre technician helps install, operate and remove technical equipment and systems on stages and in other performance spaces.

Purpose of the apprenticeship

The Technical Theatre Apprenticeship is an opportunity to train for the role of a technician within the performing arts industry.

What is involved?

You will be based in the Technical Department of the ROH, Covent Garden. The Technical Department is responsible for the management and running of the two stages and all other technical areas.

- You will study for a Creative Venue Technician Standard with the National College Creative Industries (www.creativeindustries.ac.uk).
- You will work in many different areas of the Technical Department including the build area, lighting, sound, and the main stage (stage props, flies, stage lighting etc). There will be a chance to specialise in one area towards the end of the apprenticeship.
- One day per week will be allocated to college work, the day will be scheduled flexibly to fit with college and department requirements.



Role / Title:

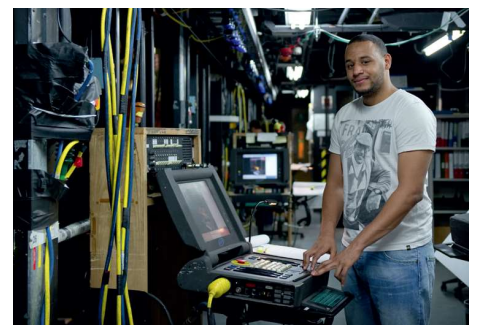
Technical Theatre Apprentice

Reports to:

Apprenticeships Manager

Line managed by:

Assigned technical manager



What is involved? (cont.)

- You will work an average of 42.5 hours per week. Some weeks you will work more than 42.5 hours, but this will be balanced by working less than 42.5 hours in other weeks. This is a typical theatre working pattern which allows for you to get fully involved with shows and projects.
- As part of the apprenticeship, in your second year there will be the opportunity to spend time in the technical departments of other venues.
- You will be supported throughout the apprenticeship by a college assessor, technical staff and the HR Team.

Who will you be working with?

You will work alongside a variety of people and departments throughout the apprenticeship, but you will work most often with the following teams:

- Technicians
- Technical and Production Managers
- Stage Managers
- Performers
- Health & Safety Team

What will you do in the workplace during the apprenticeship?

- Take part in all technical work for a show from workshops to rehearsal room, to on-stage rehearsals and performances, then in to storage.
- Learn about lighting (maintenance, set-up, focussing and follow spots), sound and broadcast, building and breaking down of scenery, moving scenery, setting props on stage, and all aspects of technical work in the theatre.
- Keep up-to-date with any new and improved ways of working and new theatre technology.
- Have a positive and responsible attitude to health and safety.
- Take responsibility for your own attendance, safe working, motivation, discipline and welfare.
- Undertake additional training as required, including: Manual Handling, Working at Height and Safe Use of Mobile Elevated Platforms, (MEWPS).
- Submit learning logs and diaries to the Apprenticeships Manager as required.
- Attend regular meetings with line managers and the Apprenticeships Manager to review progress.



Technical Theatre Apprentice

Minimum Essential Requirements

- You must be **18 years old or over** on 6th September 2021.
- You must **not** have completed a degree or equivalent level qualification in the UK or elsewhere.
- You **must have** work authorisation for the UK.
- Ability and willingness to work long hours, including evenings and weekends.

What are we looking for in a Technical Theatre Apprentice?

- An interest in working backstage in the performing arts.
- Previous involvement in a backstage environment or other live performance event would be desirable. This could be at school, college, youth club, local theatre or venue, or amateur dramatics group.
- Good at working in a team.
- A practical approach to problem solving.
- Good at practical, hands-on tasks.
- Punctual and good at managing your own schedule.
- Respectful and receptive approach to all health and safety requirements.
- Self-motivated to acquire new skills and knowledge.
- A helpful, positive and proactive approach.
- Willing to work at height.
- Physically capable of undertaking the requirements of the job including good spatial awareness. Reasonable adjustments will be considered as part of your application.

Note:

This Job Description reflects the current situation. It does not preclude change or development that might be required in the future.

